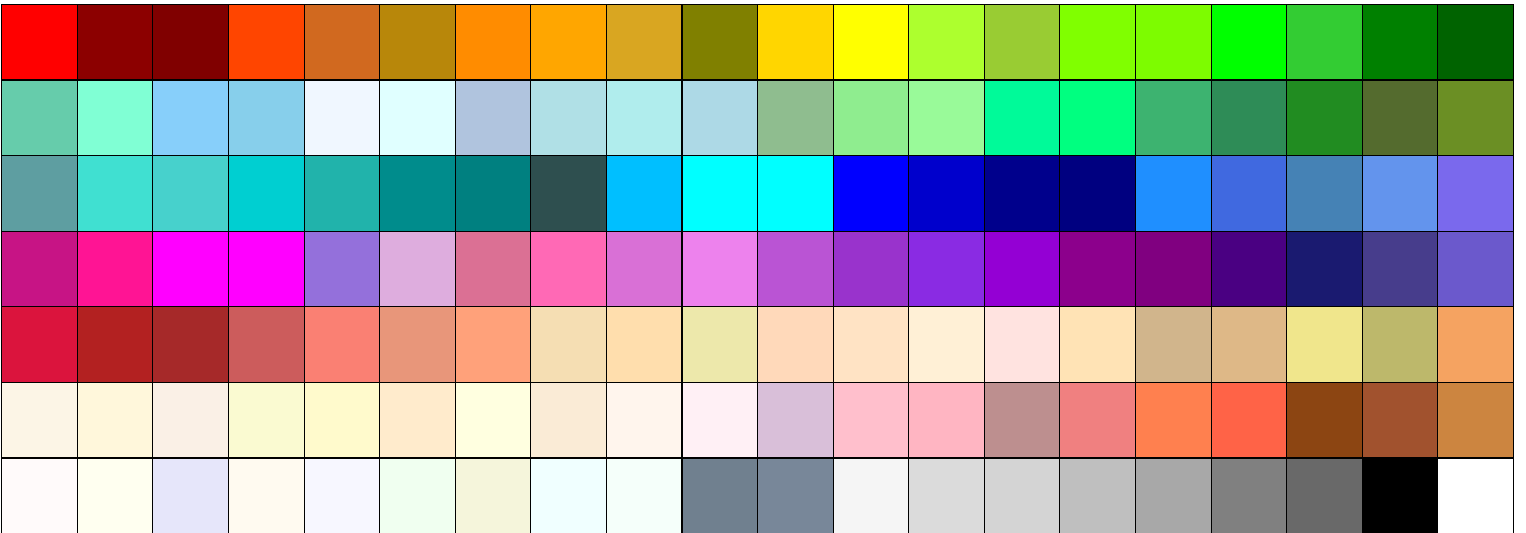
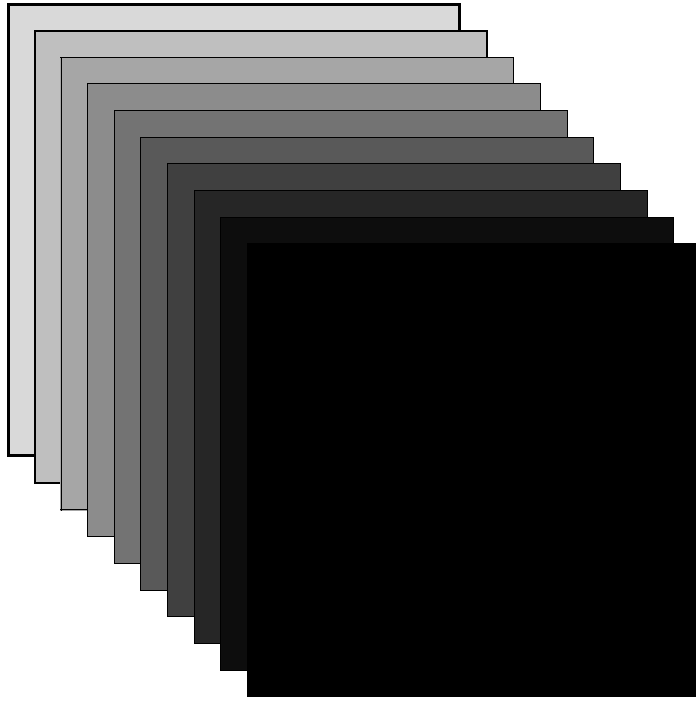


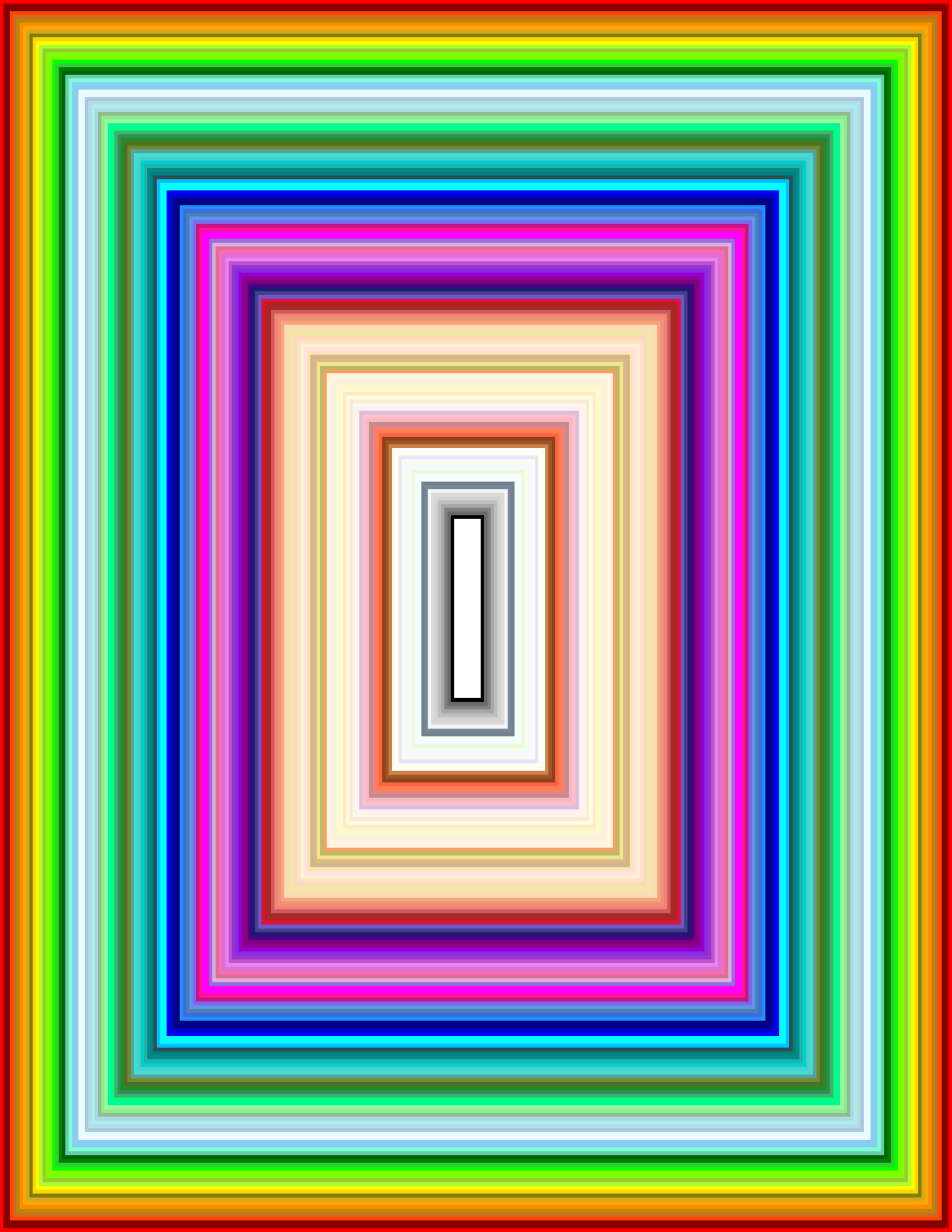
The first part of the document discusses the importance of maintaining accurate records of all transactions. It emphasizes that every entry should be supported by a valid receipt or invoice. This not only helps in tracking expenses but also ensures compliance with tax regulations.

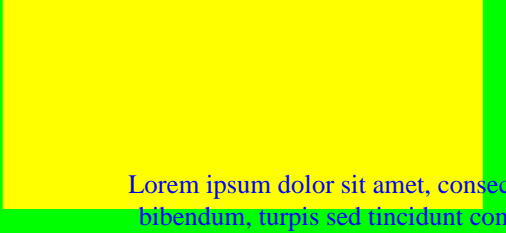
In the second section, the author provides a detailed breakdown of the company's revenue streams. This includes sales from various product lines and services. The analysis shows that while one product line is currently the primary source of income, diversification into other areas is necessary for long-term growth.

The third section focuses on the company's operational costs. It identifies areas where expenses are particularly high and suggests strategies to optimize these costs without compromising the quality of products or services.

Finally, the document concludes with a summary of the overall financial performance and a set of recommendations for the upcoming fiscal year. The author stresses the need for continuous monitoring and adjustment of financial strategies to stay on track with the company's goals.







Lorem ipsum dolor sit amet, consectetur adipiscing elit. Fusce bibendum, turpis sed tincidunt commodo, quam elit pulvinar nisl, eget ultrices purus quam ac quam. Sed a arcu. Donec diam. Nulla lorem felis, accumsan suscipit, euismod non, volutpat ac, nibh. Etiam varius turpis id ante. Ut ut est semper metus consectetur.

Lorem ipsum dolor sit amet, consectetur adipiscing elit. Fusce bibendum, turpis sed tincidunt commodo, quam elit pulvinar nisl, eget ultrices purus quam ac quam. Sed a arcu. Donec diam. Nulla lorem felis, accumsan suscipit, euismod non, volutpat ac, nibh. Etiam varius turpis id ante. Ut ut est semper metus consectetur.

Lorem ipsum dolor sit amet, consectetur adipiscing elit. Fusce bibendum, turpis sed tincidunt commodo, quam elit pulvinar nisl, eget ultrices purus quam ac quam. Sed a arcu. Donec diam. Nulla lorem felis, accumsan suscipit, euismod non, volutpat ac, nibh. Etiam varius turpis id ante. Ut ut est semper metus consectetur.

Lorem ipsum dolor sit amet, consectetur adipiscing elit. Fusce bibendum, turpis sed tincidunt commodo, quam elit pulvinar nisl, eget ultrices purus quam ac quam. Sed a arcu. Donec diam. Nulla lorem felis, accumsan suscipit, euismod non, volutpat ac, nibh. Etiam varius turpis id ante. Ut ut est semper metus consectetur.

Lorem ipsum dolor sit amet, consectetur adipiscing elit. Fusce bibendum, turpis sed tincidunt commodo, quam elit pulvinar nisl, eget ultrices purus quam ac quam. Sed a arcu. Donec diam. Nulla lorem felis, accumsan suscipit, euismod non, volutpat ac, nibh. Etiam varius turpis id ante. Ut ut est semper metus consectetur.

Lorem ipsum dolor sit amet, consectetur adipiscing elit. Fusce bibendum, turpis sed tincidunt commodo, quam elit pulvinar nisl, eget ultrices purus quam ac quam. Sed a arcu. Donec diam. Nulla lorem felis, accumsan suscipit, euismod non, volutpat ac, nibh. Etiam varius turpis id ante. Ut ut est semper metus consectetur.

Lorem ipsum dolor sit amet, consectetur adipiscing elit. Fusce bibendum, turpis sed tincidunt commodo, quam elit pulvinar nisl, eget ultrices purus quam ac quam. Sed a arcu. Donec diam. Nulla lorem felis, accumsan suscipit, euismod non, volutpat ac, nibh. Etiam varius turpis id ante. Ut ut est semper metus consectetur.

Lorem ipsum dolor sit amet, consectetur adipiscing elit. Fusce bibendum, turpis sed tincidunt commodo, quam elit pulvinar nisl, eget ultrices purus quam ac quam. Sed a arcu. Donec diam. Nulla lorem felis, accumsan suscipit, euismod non, volutpat ac, nibh. Etiam varius turpis id ante. Ut ut est semper metus consectetur.

0123456789 This is a test for Times Normal  
**0123456789 This is a test for Times Bold**  
*0123456789 This is a test for Times Italic*  
***0123456789 This is a test for Times BoldItalic***  
Underline

**Test**

0123456789 This is a test for Helvetica Normal  
**0123456789 This is a test for Helvetica Bold**  
*0123456789 This is a test for Helvetica Italic*  
***0123456789 This is a test for Helvetica BoldItalic***  
Underline

**Test**

0123456789 This is a test for Courier Normal  
**0123456789 This is a test for Courier Bold**  
*0123456789 This is a test for Courier Italic*  
***0123456789 This is a test for Courier BoldItalic***  
Underline

**Test**



*TIFF*

JPEG



*Red Sample of header repeating on pages 8-10*



*Green Sample of header repeating on pages 8-10*



*Blue Sample of header repeating on pages 8-10*